

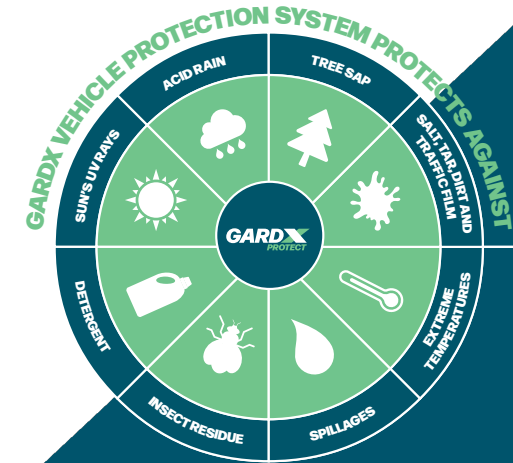
# GX1 VEHICLE PROTECTION SYSTEM.

## KEY FEATURES

- 2 Stage System
  - Stage 1 – Cleans, Fills & Bonds
  - Stage 2 – Catalyses, Smooths & Shines
- 4 layers of protective PTFE (Teflon type) coating
- Nano Technology
- Hi-gloss super smooth finish

## HELPS PROTECT AGAINST

- Spillages
- Acid Rain
- Extreme Temperatures
- Tree Sap
- Salt, tar, dirt and traffic film
- Bug/insect fluids
- Sun's UV Rays
- Detergents and cleaning chemicals



## STAIN GUARD

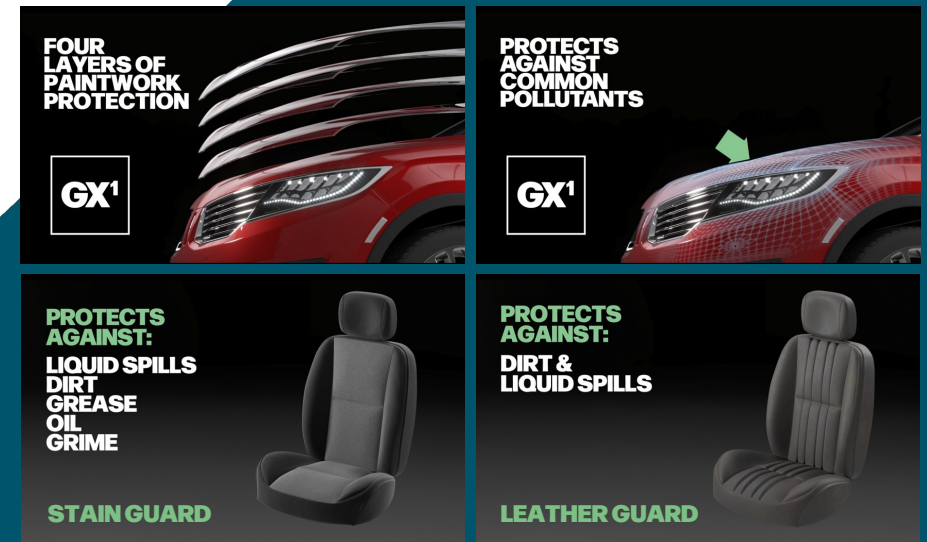
Designed to keep your interior fabric looking fresh, while protecting it from the harsh realities of life – such as liquid spills, dirt, grease, oil and grime. Spillage will either bead up on the fabric surface, ready to be wiped or vacuumed away, or it will simply pass straight through the weave without staining.

## LEATHER GUARD

A breathable treatment engineered to nourish and moisturise your leather interiors. Ensuring a natural look and feel is maintained. It provides an invisible coating that shields against stains, dirt and liquid spills.

## BENEFITS

- Repels Pollutants
- Showroom Shine
- Hydrophobic Surface
- Reduced adhesion from debris



# GX1 ADDITIONAL BENEFITS.

## GLASS GUARD

Creates a far safer driving environment causing water to bead and aerodynamically run off. Dramatically improves visibility by keeping glass free of rain, snow, salt, dirt, and bugs, improving reaction times and offering improved safety.

## TYRE GUARD

A quick, safe and simple temporary repair allowing you to drive your vehicle to a safer location and onwards for a professional tyre repair. Environmentally friendly water-based foam sealant can be washed safely from the tyre and the repair made.

## BIRD DROPPING REMOVER

Paintwork damage will occur if the droppings are not removed in a timely manner. Bird Dropping Remover will soften and neutralise droppings, allowing them to be removed quickly and easily. Will also help restore protection to the affected area.

## CLAIMS PROCEDURE

If you wish to make a claim, contact the supplying dealer or the GardX Protect Head Office within 21 days of the problem occurring and they will arrange to assess the claim. Please note we reserve the right to request that photographic evidence be submitted to GardX Protect for evaluation. You will be asked for your guarantee number. Please ensure you have complied with the terms and conditions.

**CLAIMS HOTLINE: 01243 376426**

**Office Hours (Mon – Fri) 09:00 – 17:30**

**[assureservices@gardxgroup.com](mailto:assureservices@gardxgroup.com)**



# GX1 ADDITIONAL BENEFITS.

## CLEANING ADVICE AND GUARANTEE

### WASH & WAX

When washing the vehicle with GardX Wash and Wax or any other quality shampoo please adhere to the following directions. Add the GardX Wash and Wax (or shampoo) to a bucket of warm water. Pre-wet the vehicle thoroughly and apply with a soft sponge, washing away the dirt and grime. Rinse off thoroughly with clean water. Ensure the vehicle is washed regularly and any stubborn marks removed. Please ensure bird droppings are removed within a timely manner.

### CONSERVER

Conserver is designed to rejuvenate and maintain in peak condition the protection offered by the GardX system. Wash the car as directed above, rinse only and do not dry. Shake the Conserver bottle well before adding three capfuls to 2 litres of clean water and apply with a clean soft sponge to all the paintwork. Conserver is attracted to the surface of the paint and will begin to bead and shed water. Finish by simply rinsing with clean water and leather off until dry.

### FABRIC PROTECTION

GardX Stain Guard once applied needs no additional treatment. If a spill occurs on the upholstery or carpets, absorb with a detergent free cloth immediately. Wring the cloth out frequently in clean warm water.

### LEATHER PROTECTION

GardX Leather Guard will ensure your seats are moisturised, supple and protected from stains and spills. If a spill does occur, simply wipe with a damp cloth as soon as possible. To remove surface soil, wipe with warm soapy water.

### GLASS GUARD

Clean glass thoroughly. Pour a very small amount of liquid onto a clean dry cloth applying evenly until the windscreen is covered. Leave on for 2 minutes and polish dry. If smears appear sprinkle some water onto the glass and wipe off with a paper wipe. For glass only, avoid contact with other materials. In case of accidental contact wipe off immediately and wash with detergent and clean water. ONCE OPENED, STORE IN AN UPRIGHT POSITION IN A SAFE WELL-VENTILATED AREA (NOT IN YOUR VEHICLE).

### TYRE GUARD

Please refer to the Tyre Guard label for full directions of use. Please secure the can in a safe position in your vehicle, out of direct sunlight within the luggage compartment area. We do not recommend storing it in the passenger compartment. Please ensure that the can cannot roll around and come into contact with sharp objects that may cause the skin of the can to be dented, damaged or punctured. After using Tyre Guard please ensure that you alert the tyre repair technician that the tyre contains highly flammable gas. Hand the can to the technician and highlight the safety precautions. Note: Tyre Guard is water-soluble and can be washed from the tyre, if the tyre is safe to repair.

WE RECOMMEND THAT YOUR CUSTOMER TAKE HOME PACK AND CHEMICALS ARE STORED IN A DRY, WELL-VENTILATED PLACE. STORAGE IN YOUR VEHICLE IS NOT RECOMMENDED, WITH THE EXCEPTION OF TYRE GUARD.

Please note your customer care pack may not contain all the items listed above.